



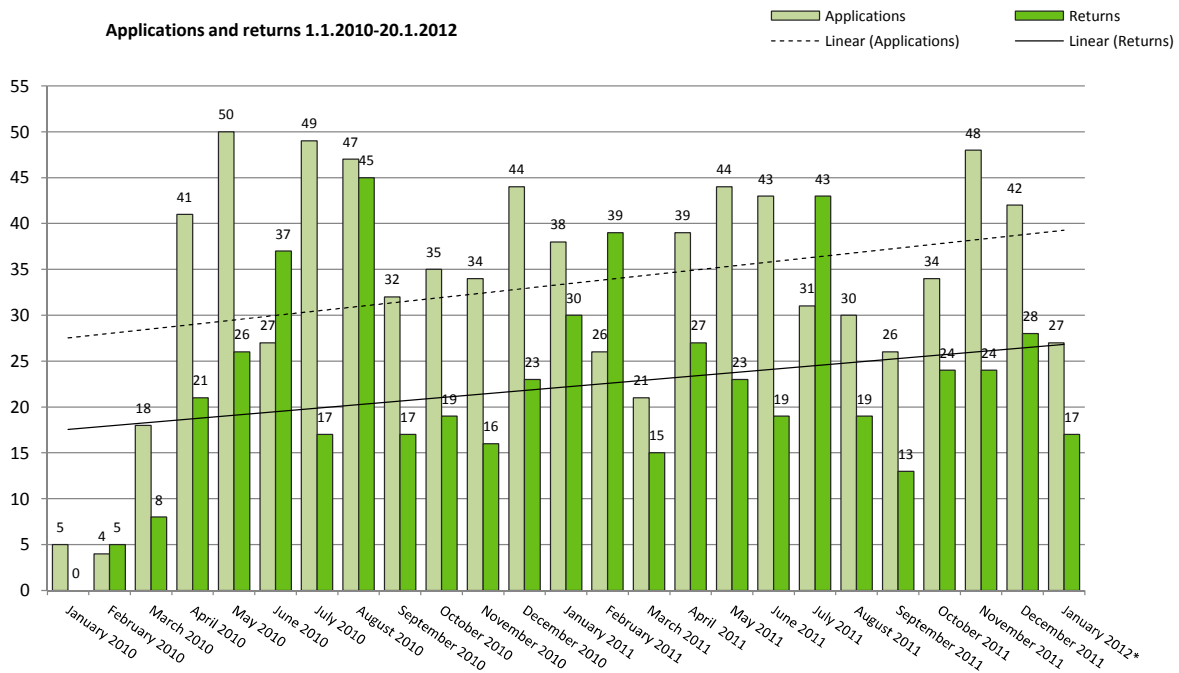
VAPAAEHTOINEN PALUU
ASSISTED VOLUNTARY RETURN
FRIVILLIGT ÅTERVÄNDANDE

Statistics 1.1.2010-20.1.2012

Applications and returns by month 1.1.2010-20.1.2012	Applications	Returns
January 2010	5	0
February 2010	4	5
March 2010	18	8
April 2010	41	21
May 2010	50	26
June 2010	27	37
July 2010	49	17
August 2010	47	45
September 2010	32	17
October 2010	35	19
November 2010	34	16
December 2010	44	23
January 2011	38	30
February 2011	26	39
March 2011	21	15
April 2011	39	27
May 2011	44	23
June 2011	43	19
July 2011	31	43
August 2011	30	19
September 2011	26	13
October 2011	34	24
November 2011	48	24
December 2011	42	28
January 2012*	27	17
Total	835	555

18 transferred to PEPP-project

*Until 20.1.2012



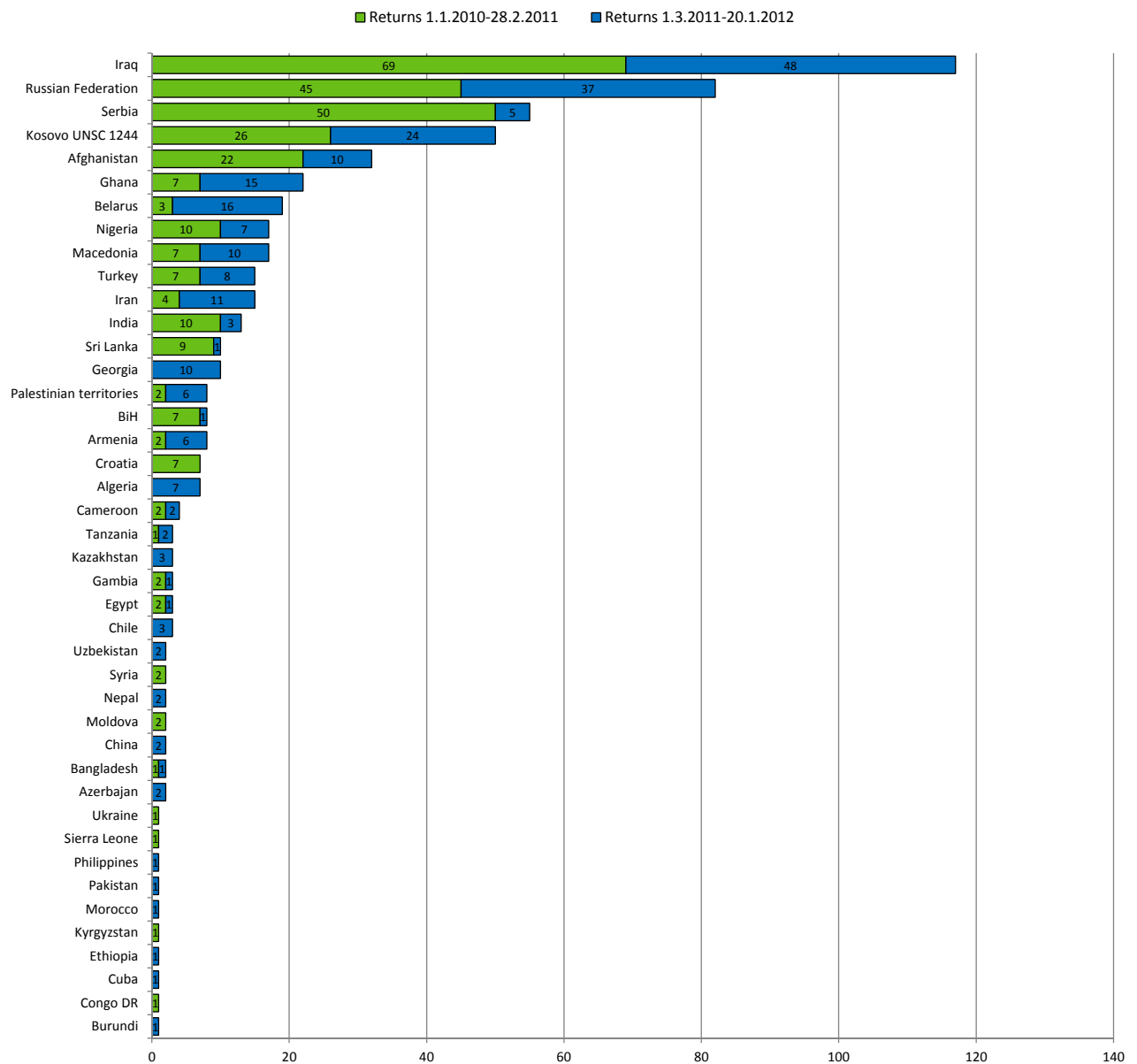
IOM • OIM



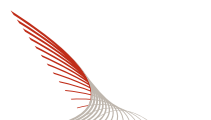
EU Return Fund
Euroopan Paluurahasto

Returns by country / area

1.1.2010 - 20.1.2012



IOM • OIM



MAAHANMUUTTOVIRASTO
MIGRATIONSVERKET
FINNISH IMMIGRATION SERVICE



EU Return Fund
Euroopan Paluurahasto

Returns by country / area continues

1.1.2010 - 20.1.2012 continues

Returns By Country / Area	1. phase	2. phase	Total
Burundi		1	1
Congo DR	1		1
Cuba		1	1
Ethiopia		1	1
Kyrgyzstan	1		1
Morocco		1	1
Pakistan		1	1
Philippines		1	1
Sierra Leone	1		1
Ukraine	1		1
Azerbaijan		2	2
Bangladesh	1	1	2
China		2	2
Moldova	2		2
Nepal		2	2
Syria	2		2
Uzbekistan		2	2
Chile		3	3
Egypt	2	1	3
Gambia	2	1	3
Kazakhstan		3	3
Tanzania	1	2	3
Cameroon	2	2	4
Algeria		7	7
Croatia	7		7
Armenia	2	6	8
BiH	7	1	8
Palestinian territories	2	6	8
Georgia		10	10
Sri Lanka	9	1	10
India	10	3	13
Iran	4	11	15
Turkey	7	8	15
Macedonia	7	10	17
Nigeria	10	7	17
Belarus	3	16	19
Ghana	7	15	22
Afghanistan	22	10	32
Kosovo UNSC 1244	26	24	50
Serbia	50	5	55
Russian Federation	45	37	82
Iraq	69	48	117
Total	303	252	555

More info:

www.assistedvoluntaryreturn.fi

E-mail: iomhelsinkiavr@iom.int

Telephone: 09-6841150

Contact persons:

Jacob Jørgensen
Essi Syrjäkari
Hisham Salim
Pirkko Väänänen



EU Return Fund
Euroopan Paluurahasto